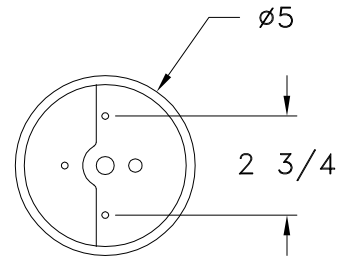


HAMMERTON

STANDARD CANOPY,
FLAT MOUNT



MOUNTING DETAIL

3' OF
1/4" CHAIN

CLOSED
TOP

MICA

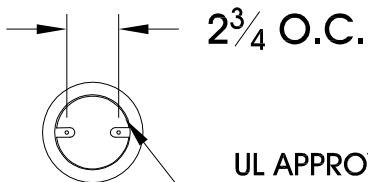
STANDARD
FINISH

MICA

22

9

MOUNTING SPECIFICATION NOTES:

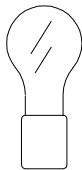


2 3/4 O.C.

UL APPROVED
J-BOX

CAUTION
HARDWARE PACKET "J" MOUNTS
DIRECTLY TO J-BOX.

ELECTRICAL SPECIFICATION NOTES:



ELECTRICAL: 1-100 WATT MAX
EDISON BASE
120v TYPICAL
Light Bulb NOT Included

CATALOG # LA9043-M

APPROXIMATE WEIGHT: 25 Lbs.

HARDWARE PACKET: J

SHADE MATERIAL : MICA

UL RATING: DAMP

DIMENSION TOLERANCE ±7/8".

www.hammerton.com

© Copyright 2006, All rights in design, detail or invention of this drawing are reserved as the property of Hammerton. Any imitation or adaptation without written consent is strictly prohibited.